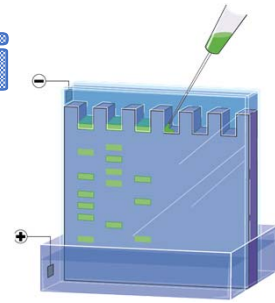
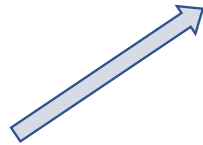
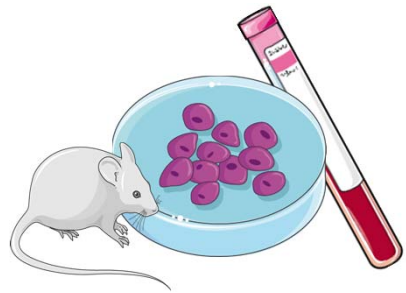
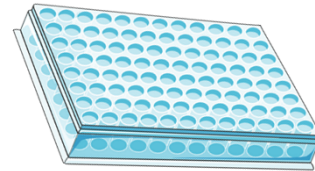


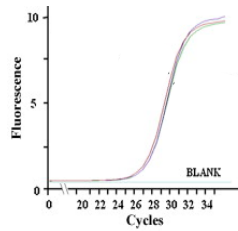
Tecniche prevalenti



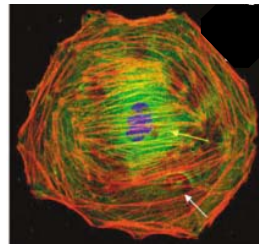
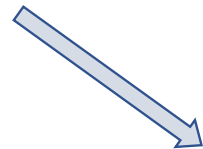
Western blot



Test ELISA

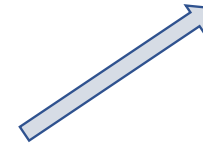


Real-time PCR¹

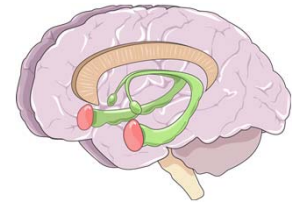


Immunocitochimica²

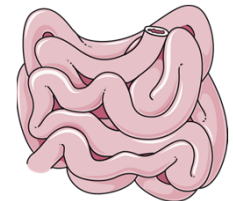
Principali linee di ricerca



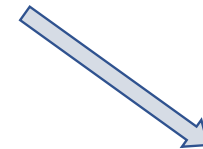
Retinopatia diabetica



Ischemia cerebrale
Malattia di Alzheimer



Microbiota



Sclerosi Multipla

1. Amadio M *et al*, Biochemical Pharmacology 80(8): 1230-7, 2010.

2. Pascale A *et al*, GLIA 46: 169-182, 2003.

3. Ambrosio FA *et al*, Journal of Medicinal Chemistry 64(14): 9989-10000, 2021: